

# Forced Migration



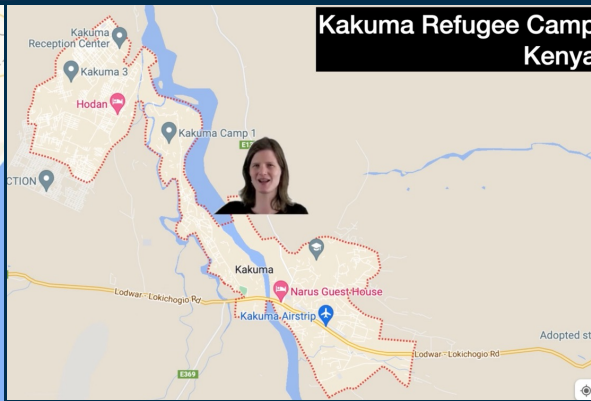
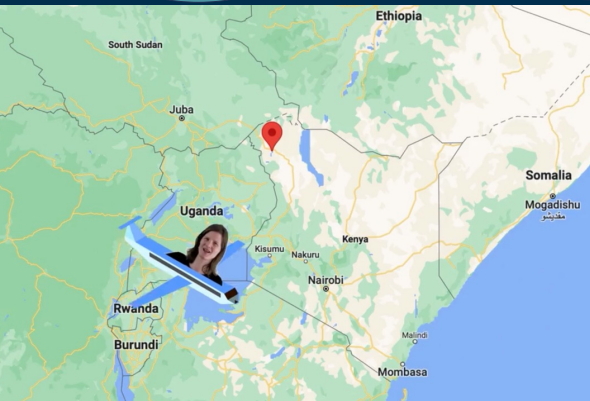
'I stay and wait.'

Hope for the future

Deaf (im)mobility



**Amandine le Maire** (she/her) is a Belgian anthropologist with a keen interest in the field of Deaf Studies and especially in deaf space and relocation, displacement of deaf people. Amandine has conducted research projects in Denmark and Belgium, studying the relocation of deaf families. Currently she is pursuing a PhD on deaf refugees within the MobileDeaf project.



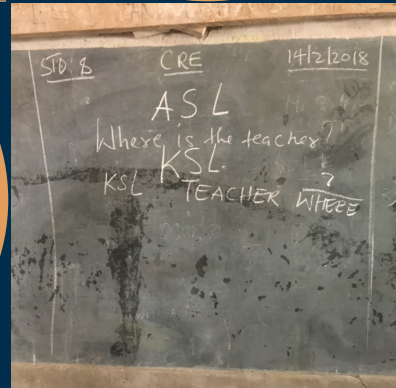
**Mobility and immobility experienced simultaneously, on different scales:** stuckness, but mobility within and outside of the camp



**Communication strategies: Kenyan Sign Language, "village signs", writing, speaking and mouthing in home languages**



« I use American signs, it is different (...) When I moved to Kakuma, American signs are better »



**Deaf schools, deaf houses and adult learning places are important deaf nodes in the camp**

Deaf refugees build capital through everyday activities:  
**Social capital:** building networks.  
**Economic capital:** business and employment.  
**Cultural capital:** through education.



**Different levels of waiting time:**  
 Long term: waiting for resettlement.  
 Everyday: daily needs

